



European Commission



# Mutual Learning Exercise R&I Foresight

#HorizonEU

## PSF CHALLENGE - MUTUAL LEARNING EXERCISE (MLE)

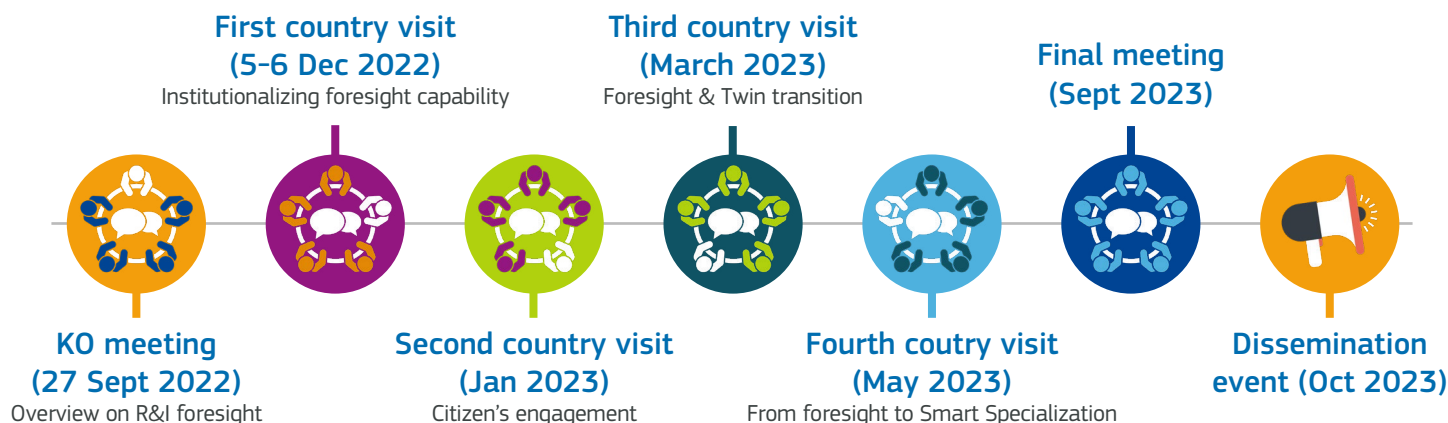
The purpose of the Mutual Learning Exercise (MLE) is to facilitate the exchange of information, experiences and lessons learnt in the practice of R&I foresight across EU and Associated Countries, and to contribute to the development of an impactful R&I foresight community as an important element of European Research Area. The following topics have been selected:

- Topic 1: Introduction and overview on R&I foresight
- Topic 2: Institutionalising foresight capability and creating wide foresight communities in the R&I system
- Topic 3: Citizens' engagement approaches and methods
- Topic 4: Foresight, the twin transition and potential disruptions
- Topic 5: From foresight for Smart Specialisation to engagement in EU Research Programmes, Missions, and Partnerships

Visit the website for more information: <https://ec.europa.eu/research-and-innovation/en/statistics/policy-support-facility>

Participating countries:

### Scheduled meetings



### Chair

Cornelia Daheim (also Expert on Topic 1)

### Rapporteur

Jennifer Harper (also Expert on Topic 2)

### Independent Experts

Philippe Destatte (Expert on Topic 3)

Paulo Soeiro de Carvalho (Expert on Topic 4)

Michal Pazour (Expert on Topic 5)

### DG R&I Policy Officers

Jürgen Wengel

[Juergen.WENGEL@ec.europa.eu](mailto:Juergen.WENGEL@ec.europa.eu)

Annamaria Zonno

[Annamaria.ZONNO@ec.europa.eu](mailto:Annamaria.ZONNO@ec.europa.eu)